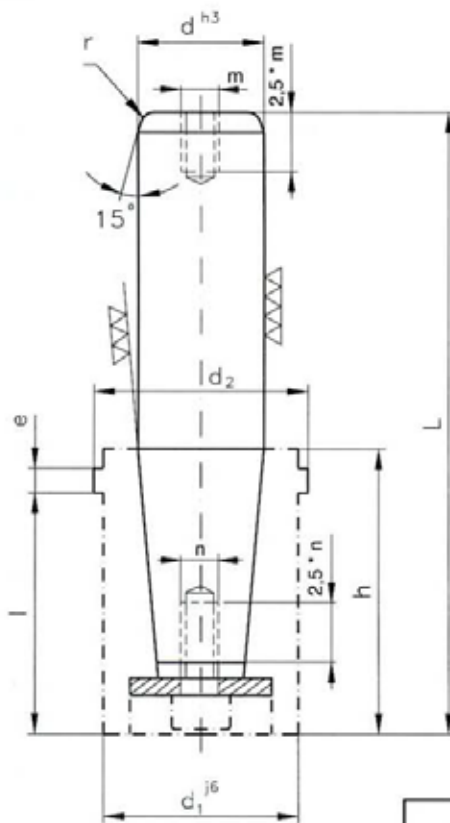


COLUMNA DE CAMBIO RÁPIDO  
(GUIDE PILLAR WITH TAPER LEAD)

5220



**MATERIAL:** Acero para cojinete a bolas  
**DUREZA:** 62 ± 2 HRc  
**MONTAJE:** Asiento cónico con casquillo 5350  
**FORMA DE PEDIDO:** 5220 Ø 50 x 240

**MATERIAL:** Tempered steel for retainers  
**HARDNESS:** 62 ± 2 HRc  
**MOUNTING:** Tapered bearer with 5350 bush  
**HOW TO ORDER:** 5220 Ø 50 x 240

\* Se fabrican bajo pedido  
 \* This part is manufactured on request

| d              | 24  | 25 | 30  | 32 | 40  | 42 | 50  | *63 | *80 | *100 |
|----------------|-----|----|-----|----|-----|----|-----|-----|-----|------|
| d <sub>1</sub> | 40  |    | 48  |    | 58  |    | 70  | 90  | 112 | 140  |
| d <sub>2</sub> | 44  |    | 52  |    | 62  |    | 74  | 98  | 120 | 148  |
| l              | 49  |    | 54  |    | 59  |    | 64  | 78  | 88  | 116  |
| e              | 6,2 |    | 6,2 |    | 6,2 |    | 6,2 | 10  | 10  | 12   |
| h              | 61  |    | 66  |    | 71  |    | 76  | 98  | 108 | 138  |
| m              | -   |    | -   |    | -   |    | M6  | M10 | M10 | M12  |
| n              | M8  |    | M8  |    | M8  |    | M8  | M10 | M10 | M10  |
| L              | 160 |    |     |    |     |    |     |     |     |      |
|                | 180 |    |     |    |     |    |     |     |     |      |
|                | 200 |    |     |    |     |    |     |     |     |      |
|                | 220 |    |     |    |     |    |     |     |     |      |
|                | 240 |    |     |    |     |    |     |     |     |      |
|                | 260 |    |     |    |     |    |     |     |     |      |
|                | 280 |    |     |    |     |    |     |     |     |      |
|                | 315 |    |     |    |     |    |     |     |     |      |
|                | 355 |    |     |    |     |    |     |     |     |      |
|                | 400 |    |     |    |     |    |     |     |     |      |